

Juhong Tanke Mixture (*Juhong Tanke Ye*) – 橘红痰咳液

Sample source

Commercially available Juhong Tanke Mixture

Chemical reference substances

naringin (National Institute for the Control of Pharmaceutical and Biological Products, Batch number 110722-200309)

Preparation of test solution

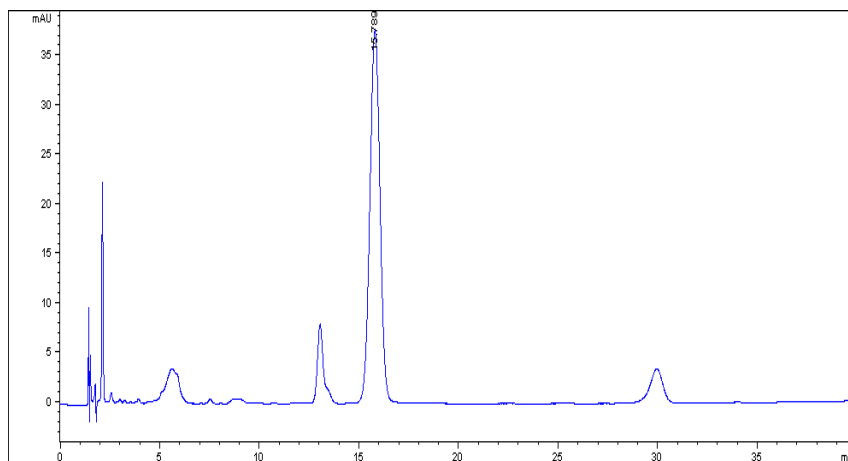
Accurately measure 10 mL of the mixture, extract the mixture with six 10 ml quantities of ethyl acetate by shaking, combine the ethyl acetate extracts, and evaporate to dryness. Dissolve the residue in methanol and transfer to 100 mL volumetric flask, dilute with methanol to volume, mix well, and filter, use the filtrate as the test solution.

Chromatographic conditions

- Column: ZORBAX SB C18 4.6×150 mm, 5 µm (883975-902)
- Column temperature: 25 °C
- Mobile phase: methanol-water-glacial acetic acid (31:69:3)
- Detector wavelength: 283nm
- Flow rate: 1.0 mL/min
- Injection volume: 5 µL

Chromatographic system

- Agilent 1200 Series quaternary pump with vacuum degasser
- Agilent 1200 Series high-performance autosampler
- Agilent 1200 Series thermostated column compartment
- Agilent 1200 Series diode-array detector
- System control through Agilent ChemStation revision B.01.01



Components	k'	Ret Time (min)	Height (mAU)	Area (mAU*s)	n	USP T _r
naringin		15.789	37.61	1321.5	4622	1.00