

Siwu Mixture (*Siwu Heji*) – 四物合剂

Sample source

Commercially available Siwu Mixture

Chemical reference substances

Paeoniflorin (National Institute for the Control of Pharmaceutical and Biological Products, Batch number: 0736-200220)

Preparation of test solution

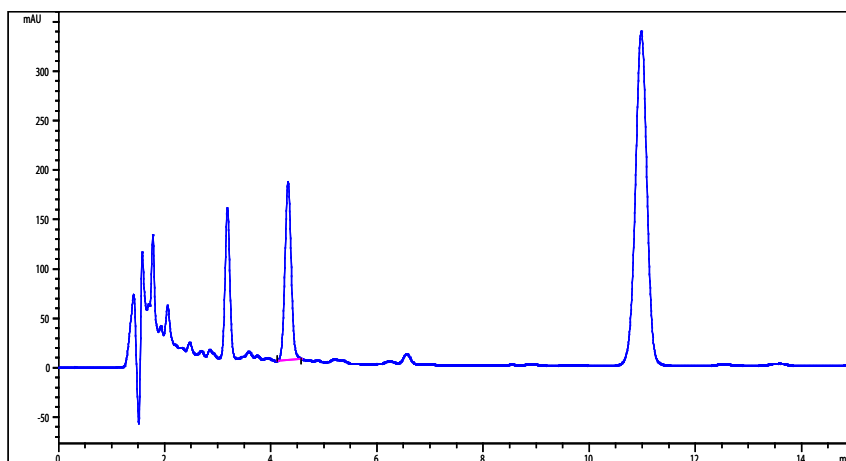
Mix the mixture well, accurately measure 0.4 mL of the mixture in a 10 mL volumetric flask, dilute with water to volume, shake well, and filter.

Chromatographic conditions

- Column: ZORBAX SB C18 4.6×150 mm, 5 µm (883975-902)
- Column temperature: 35 °C
- Mobile phase: methanol-isopropanol-acetic acid-water (25:2:2:71)
- Detector wavelength: 230 nm
- Flow rate: 1.0 mL/min
- Inject volume: 10 µL

Chromatographic system

- Agilent 1200 Series quaternary pump with vacuum degasser
- Agilent 1200 Series high-performance autosampler
- Agilent 1200 Series thermostated column compartment
- Agilent 1200 Series variable wavelength detector
- System control through Agilent ChemStation revision B.01.01



Components	k'	Ret Time (min)	Height (mAU)	Area (mAU's)	n	USP T _r
Paeoniflorin		4.326	179.97	1464.9	6770	1.05