

Yinqiao Jiedu Capsules (*Yinqiao Jiedu Jiaonang*) – 银翘解毒胶囊

Sample source

Commercially available Yinqiao Jiedu Capsules

Chemical reference substances

Chlorogenic acid (National Institute for the Control of Pharmaceutical and Biological Products, Batch number: 110753-200212)

Preparation of test solution

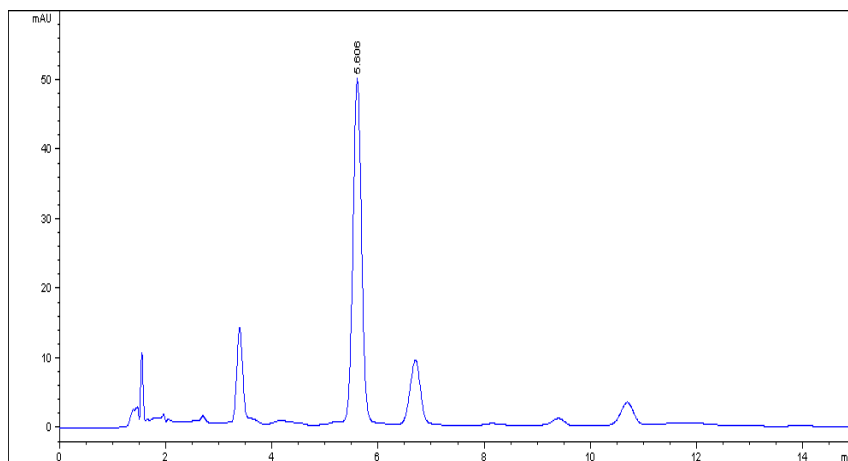
Grind the contents of the capsules to a fine powder, accurately weigh 0.25 g in a 50 mL amber volumetric flask, accurately add 40 mL of 50 % methanol, treat ultrasonically for 30 minutes, allow to cool, dilute with 50 % methanol to volume, shake well, filter and use the filtrate as the test solution.

Chromatographic conditions

- Column: ZORBAX SB C18 4.6×150 mm, 5 μm (883975-902)
- Column temperature: 25 °C
- Mobile phase: methanol-water-glacial acetic acid-triethylamine (18:85:1:0.3)
- Detector wavelength: 324 nm
- Flow rate: 1.0 mL/min
- Injection volume: 5 μL

Chromatographic system

- Agilent 1200 Series quaternary pump with vacuum degasser
- Agilent 1200 Series high-performance autosampler
- Agilent 1200 Series thermostated column compartment
- Agilent 1200 Series diode-array detector
- System control through Agilent ChemStation revision B.01.01



Components	k'	Ret Time (min)	Height (mAU)	Area (mAU*s)	n	USP T _r
Chlorogenic acid	2.737	5.606	49.43	545.1	6024	1.02