

# Ruyi Jinhuang Powder (*Ruyi Jinhuang San*) – 如意金黃散

## Sample source

Commercially available Ruyi Jinhuang Powder

## Chemical reference substances

curcumin (National Institute for the Control of Pharmaceutical and Biological Products, Batch number 110823-9802)

## Preparation of test solution

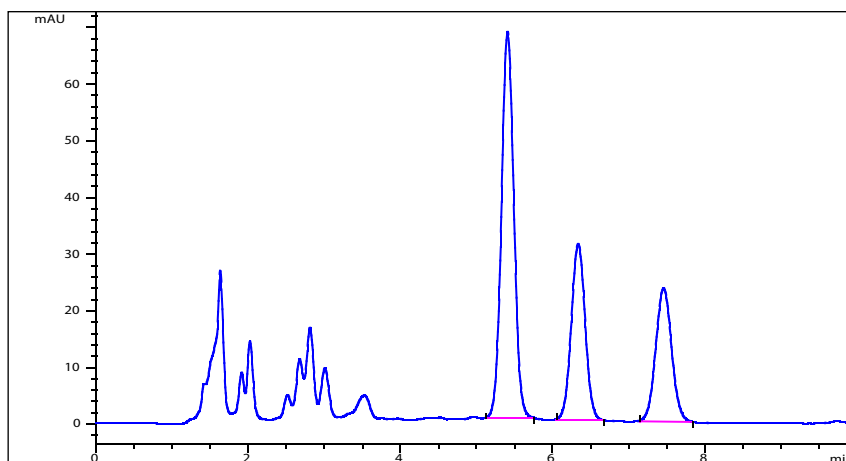
Accurately measure 0.25 g of the powder in a stoppered conical flask, accurately add 10 mL of methanol, stopper tightly and weigh. Allow to stand for 1 hour, weigh again, and replenish the lost weight with methanol, centrifuge, and use the supernatant as the test solution.

## Chromatographic conditions

- Column: ZORBAX SB C18 4.6×150 mm, 5 µm (883975-902)
- Column temperature: 35 °C
- Mobile phase: methanol-isopropanol-0.5% acetic acid (19:25:56)
- Detector wavelength: 430 nm
- Flow rate: 1.0 mL/min
- Injection volume: 5 µL

## Chromatographic system

- Agilent 1200 Series quaternary pump with vacuum degasser
- Agilent 1200 Series high-performance autosampler
- Agilent 1200 Series thermostated column compartment
- Agilent 1200 Series variable wavelength detector
- System control through Agilent ChemStation revision B.01.01



Components	k'	Ret Time (min)	Height (mAU)	Area (mAU*s)	n	USP T <sub>r</sub>
Curcumin	3.506	5.408	68.28	772.8	5407	1.03