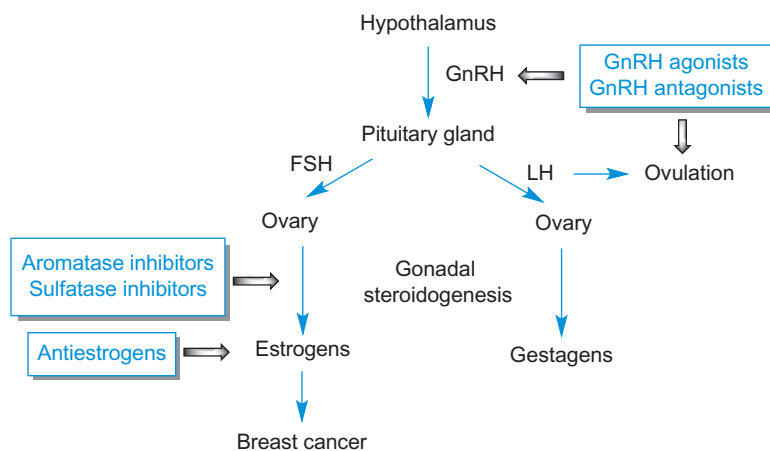
**FIGURE 3.34**

A summary of the strategies used to reduce testosterone levels.

In women, LH liberation stimulates the onset of ovulation in the first phase of the menstrual cycle and stimulates the production of progesterone in the second phase. Another pituitary hormone known as follicle-stimulating hormone (FSH) stimulates the secretion of estrogens in the ovary, although small amounts of LH are also required. A summary of these steps and the drugs used in breast and gynecological cancers, some of them already discussed, is presented in [Figure 3.35](#).

**FIGURE 3.35**

A summary of the strategies used to reduce estrogen and gestagen levels.