

Table 3.2 The Amount of Water Transferred per Unit Time, Expressed as $\text{mg}/(\text{cm}^2/\text{hr})$ per Unit Membrane Thickness

Reconstructed SC disks	Flux [$\text{mg}/(\text{cm}^2/\text{hr})$]
Subject A SC with 20% lipid model	0.86 ± 0.05
Subject B SC with 20% lipid model	0.71 ± 0.09
Subject C SC with 5.8% partially saponified FFA	0.99 ± 0.03
Subject C SC with 16% partially saponified FFA	0.87 ± 0.07
Smith's value for calf SC with native lipid	1.0

In each of the above cases, the flux was determined for water penetrating through at least two tablets. The values shown are the mean \pm standard deviation.

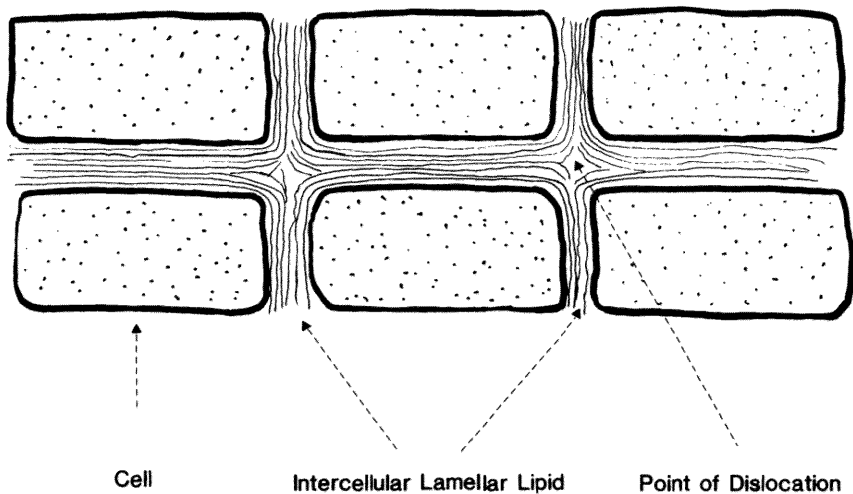


Figure 3.8 The current concept of the stratum corneum as a two-compartment system, in which cells can be analogized to bricks, and intercellular lamella to mortar.