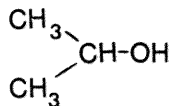
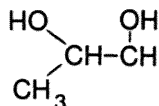


Table 3.3 Chemical Structures of Selected Hydrotropes and of Selected Transdermal Transport Enhancers

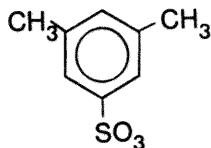
hydrotropes



isopropyl alcohol

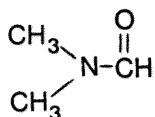


propylene glycol

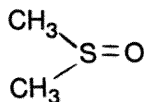


sodium xylene sulfonate

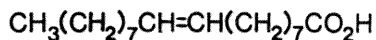
transdermal penetration enhancers



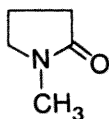
dimethyl formamide



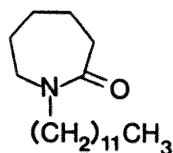
dimethyl sulfoxide



oleic acid



N-methyl-2-pyrrolidone



azone