

into the dermis. The hair follicle comprises the hair, combined with its surrounding root sheath. The sebaceous gland empties directly into the upper third of the hair follicle, and the combination of sebaceous gland and follicle is often referred to as the *pilosebaceous unit*. The sebaceous gland is the major source of skin surface lipid in the adult. A diagram representing both the skin layers and skin appendages is shown in Figure 1.

Because the sebaceous gland is the primary source of the skin surface lipids covering large portions of the anatomy, understanding the properties of this skin appendage becomes important. The sebaceous gland is well defined in the embryo, remains relatively small

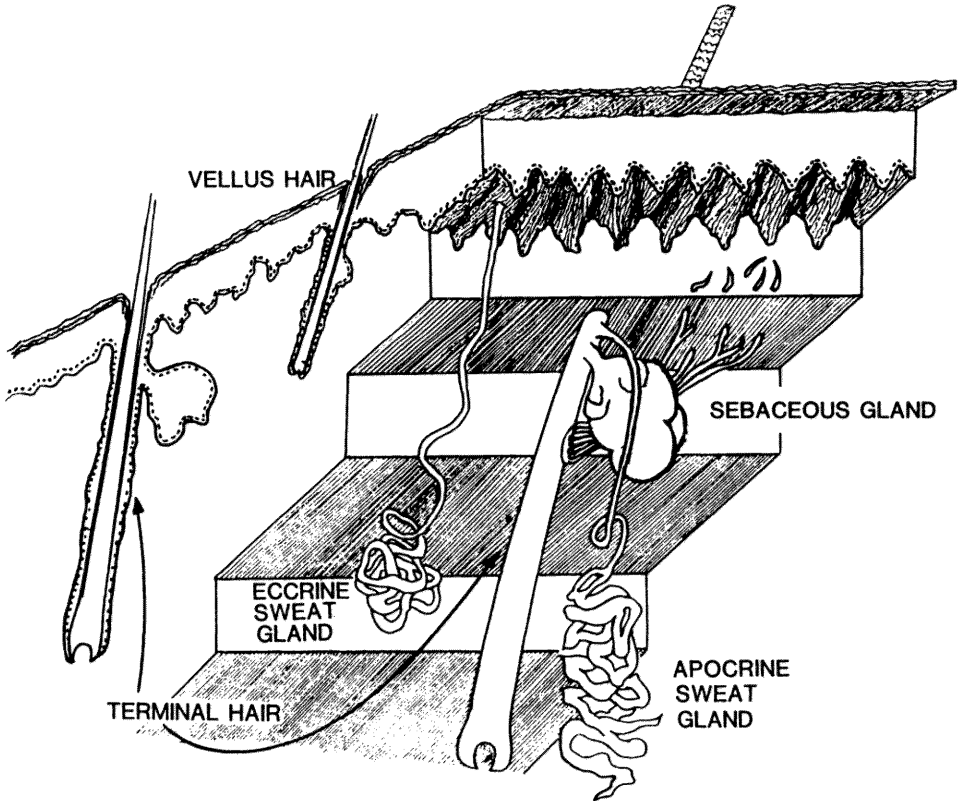


Figure 5.1 Cross-sectional representation of full-thickness thin skin.