

Figure 5.6 APOE-related blood pressure levels in the Spanish population. SBP: Systolic blood pressure; DBP: Diastolic blood pressure.

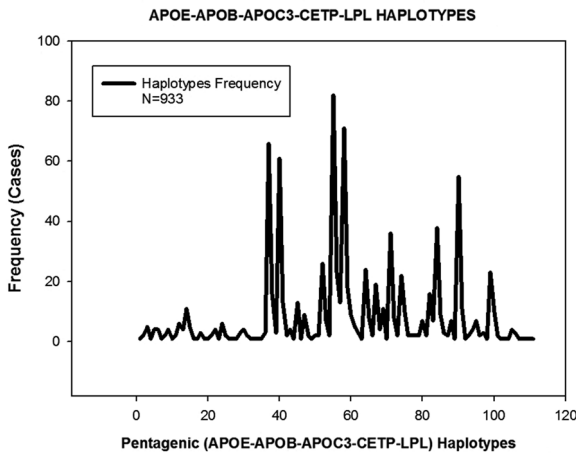


Figure 5.7 Distribution and frequency of pentagenic (APOE-APOB-APOC3-CETP-LPL) haplotypes in patients with Alzheimer's disease.

were present in more than 5% of AD patients (Figure 5.6). The haplotypes most frequently found were *H55* (33-CT-CC-AG-CC) (8.79%), *H58* (33-CT-CC-GG-CC) and *H37* (33-CC-CC-AG-CC) (7.07%). Haplotypes *H104* (44-CC-CC-AA-CC) (0.11%), *H110* (44-TT-CC-AG-CG) (0.11%) and *H98* (34-TT-CC-AA-CG) (0.11%) showed the highest CHO levels, and the lowest levels corresponded to haplotypes *H26* (23-TT-CG-AG-CC) (0.11%), *H8* (23-CC-CG-AG-CC) (0.21%), *H50* (33-CC-GG-AG-CC) (0.21%), and *H63* (33-CT-CG-AA-GG) (0.11%) (Figure 5.8). These data clearly indicate that although *APOE* is a determinant gene in hypercholesterolemia and atherosclerosis,^{4,53} there are subtle variations in these haplotypes that clearly modify the cholesterolemic phenotype and associated health risks.