

## *Levisticum officinale* W. Koch

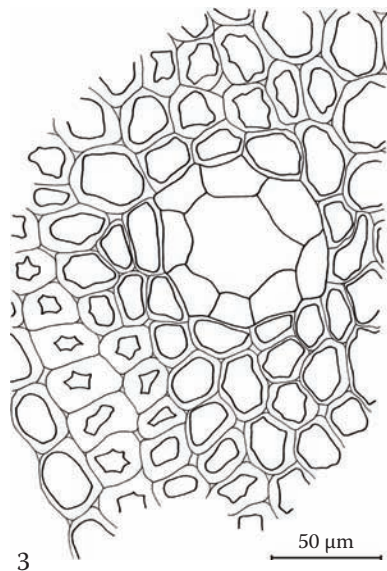
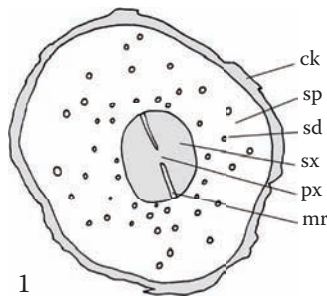
### Lovage Root

#### *Radix Levistici*

#### Apiaceae

Lovage root reportedly originated from southern Europe and was used as an ingredient in herbal diuretic tea mixtures. It is used in the United States but is not a common ingredient in commercial herbal products. However, lovage root can adulterate supplies of dang gui (*Angelica sinensis*) and angelica root (*Angelica archangelica*). For the differentiation of these, see the separate entries for the *Angelica* species.

**Transverse section:** Brown cork; cells may contain small calcium oxalate prism crystals, up to ~15  $\mu\text{m}$  long; roundish, thin-walled parenchyma occurs just interior to the cork; secondary phloem cells regularly arranged with frequent secretory ducts up to 80 (up to 100)  $\mu\text{m}$  diameter,



decreasing in size toward the vascular cambium; secondary xylem of conspicuously yellow vessels up to 80  $\mu\text{m}$  diameter arranged in cuneiform groups with parenchyma cells between; medullary rays are usually one cell broad and cells are radially elongated.

**Longitudinal section:** Yellow vessels are scalariform or reticulate.

**Starch:** Abundant; simple or two- to many-compound granules, ovate, elliptical, or spherical, 3–10  $\mu\text{m}$  long.

**Powder:** Fragments of cork with calcium oxalate prisms; secretory ducts; scalariform or reticulate vessels; parenchyma cells; starch.

