

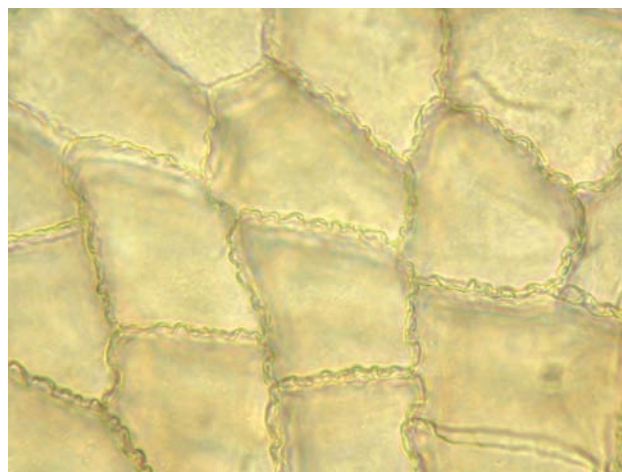
***Panax ginseng* C. A. Mey.**
Asian Ginseng Root Processed
(Cultivated Processed Red)
Radix Ginseng Rubra
 Pinyin: Hong shen, hong ren shen
Araliaceae

Red Asian ginseng is the prepared root of the yuan sheng, cultivated Asian ginseng (*Panax ginseng*) (PPRC 2000). It is prepared by steaming, which turns the root red. The root of red ginseng is anatomically identical to unprepared (white) *Panax ginseng* root except for the virtual absence of starch granules. Steam processing turns the starch granules into gelatinous masses that give the parenchyma cells a swollen appearance. Red ginseng is thought to have increased activity as an energizing tonic over the unprocessed roots.

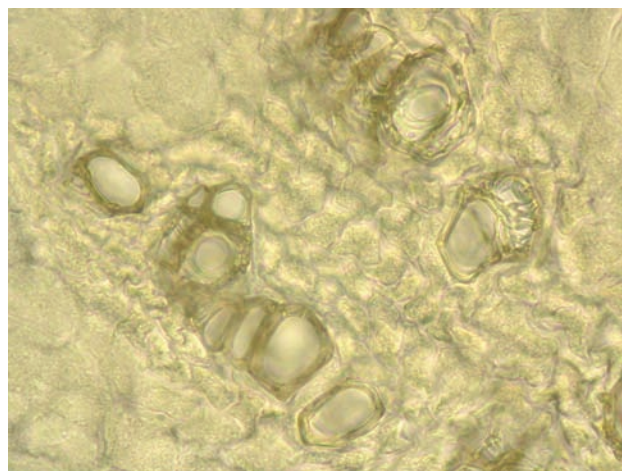
Powder: Fragments of cork; parenchyma cells, some with yellow-brown secretions or calcium oxalate cluster crystals; secretory ducts; reticulate vessels; no starch granules.

Drawings

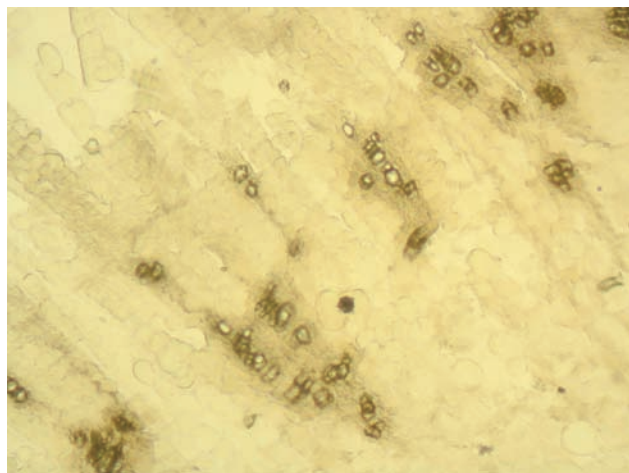
See the entry for Asian ginseng.



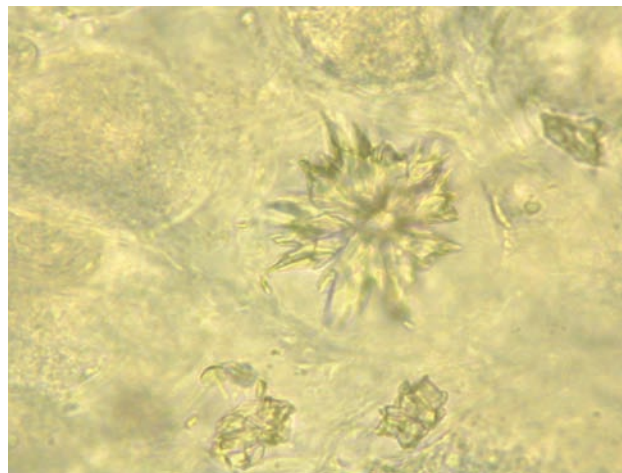
2



3



1



4