

Scutellaria baicalensis Georgi

Chinese Skullcap Root

Scutellariae baicalensis Radix

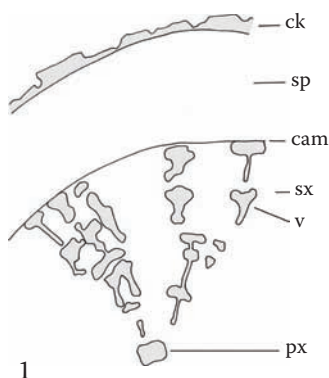
Pinyin: Huang qin

Lamiaceae

Chinese skullcap root is one of the primary herbal detoxifiers used in Chinese medicine and is especially used for the treatment of liver and gallbladder diseases, as well as in the treatment of various cancers. Due to the increasing overlap in the trade of Asian and Western botanicals, there is potential for Chinese and Western skullcap (*Scutellaria lateriflora*) to become confused in trade. This has thus far not been reported.

Transverse section: Brown cork contains sclereids; outermost narrow parenchyma with collenchyma-like wall thickenings—this tissue and the secondary phloem have numerous sclereids, the outer ones with distinct lumens, the inner ones completely thickened; secondary xylem predominantly of parenchyma; vessels, up to 70 μm diameter, arranged in groups partly connected by small radial rows of narrow vessels; in older roots, vessels may be accompanied by fibers; central primary xylem is apparent.

Longitudinal section: Cork with fusiform sclereids; secondary phloem with broad rectangular to fiber-like sclereids, up to 100 μm long; bordered-pitted or scalariform vessels.



Starch: Abundant; mostly simple granules, more or less spherical or elliptical, up to 10 μm long; large granules have a punctate hilum.

Powder: Elongated sclereids are abundant and frequently isolated from surrounding tissue; scalariform or bordered-pitted vessels; fragments of cork; brown parenchyma with fusiform sclereids; starch.

Note: Preparation of transverse sections is difficult due to numerous sclereids.

