

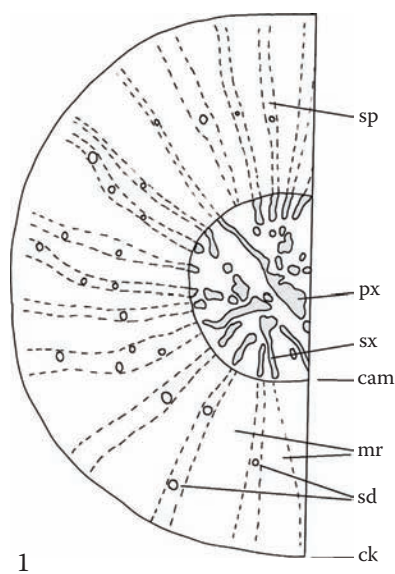
Angelica sinensis* (Oliv.) Diels*Dang Gui Root (Dong Quai)***Radix Angelicae sinensis*

Pinyin: Dang gui

Apiaceae

Dang gui, which is more commonly known in the herbal products industry as dong quai, is primarily used in traditional Chinese medicine for nourishing and enhancing the circulation of blood. It has been used in the United States since at least the late 1800s. It has become widely used in Western herbal medicine in the past 30 years. The many different forms and grades of dang gui include whole root (quan dang gui), body (dang gui shen), tails (dang gui wei), or head (dang gui tou). These are readily distinguished from each other macroscopically but are not discernible when powdered. Occasional adulteration with the closely related European species *Levisticum officinale* (ou dang gui) occurs in Asian markets. The two species are readily distinguished macroscopically and microscopically.

Transverse section: Brown cork may have small calcium oxalate prism crystals up to 14 μm long; cortex of rounded thin-walled parenchyma cells may be present in younger roots, but absent in older roots; secondary phloem



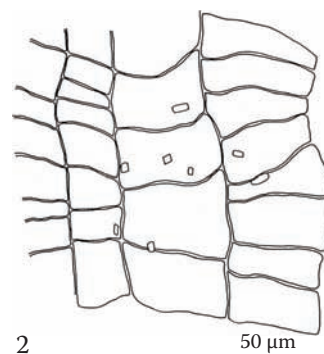
1

of regularly arranged cells; secretory ducts arranged in tangential rows in secondary phloem, ducts up to 170 μm diameter, decreasing in size toward the cambium; secondary xylem consisting of narrow rows of vessels alternating with broad, cuneiform medullary rays; vessels up to 80 μm diameter, usually in groups of two or three, with groups separated by thickened, pitted parenchyma cells.

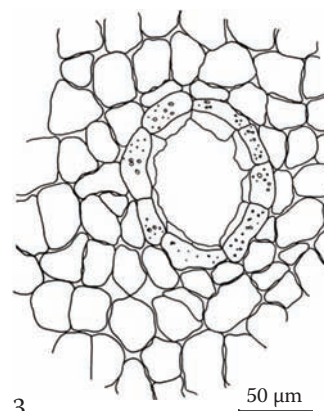
Longitudinal section: Scalariform or reticulate vessels.

Starch: Simple ovate, elliptical, or spherical granules, up to 3–8 μm long.

Powder: Fragments of cork with calcium oxalate crystals; secretory ducts; scalariform or reticulate vessels; parenchyma; starch.



2



3