

Serenoa repens (W. Bartram) Small

Saw Palmetto Fruit

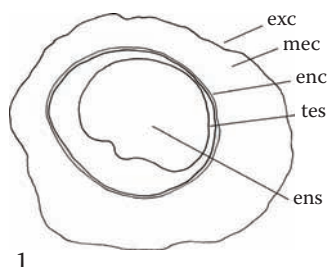
Fructus Serenoae

Arecaceae

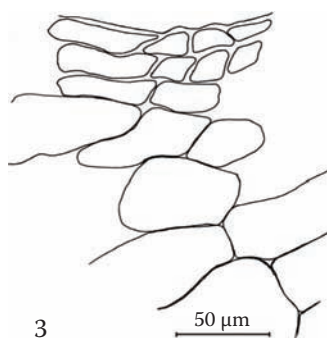
Saw palmetto or, more specifically, the high fatty acid and sterol extract of saw palmetto is the primary botanical medicine used for the treatment of enlarged prostate in the United States and Europe. Although clinical findings regarding efficacy are mixed, most herbal practitioners are convinced of its safety and efficacy. Oil products have been subject to adulteration with vegetable oils (e.g., rapeseed oil), and powdered saw palmetto berries from which the oil has been extracted can be found in trade.

A. Fruit

Surface view: Exocarp of roundish to polygonal cells with light walls and a dark lumen; groups of cells are frequently surrounded by thick cell walls, and cells within groups are separated by thin walls.



1



3

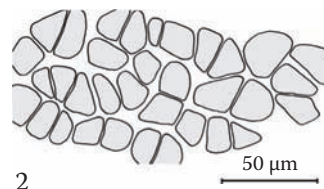
Transverse section: Exocarp of roundish to polygonal or rectangular cells; outer layer of mesocarp consists of tangentially elongated cells with dark brown contents; mesocarp of loosely packed parenchyma containing globules of volatile oil; sclereids are scattered throughout this tissue—mostly singly, but occasionally in small groups; endocarp consists of a compact layer of heavily pitted sclereids.

B. Seed

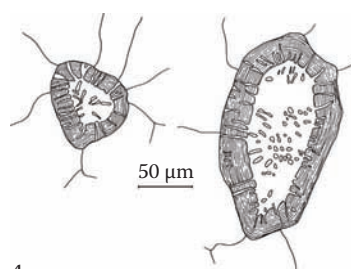
Surface view: Testa of roundish to polygonal red-brown parenchyma cells.

Transverse section: Testa of roundish to polygonal red-brown parenchyma cells; small layer of thick-walled polygonal perisperm cells; endosperm of very large cells, with irregularly beaded walls and oval or rounded pits; oil droplets are abundant.

Powder: Fragments of the exocarp consisting of cells with dark lumens; groups of sclereids from the endocarp; mesocarp parenchyma cells with brown contents; single sclereids from the mesocarp; endosperm cells with beaded walls; oil droplets.



2



4