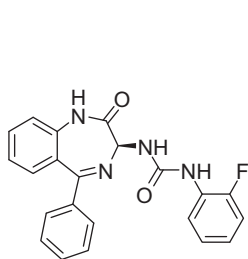


mutations) suggested that the F-protein was the likely target. The potency (EC_{50}) of these HTS hits is very high, 110 nM (P13, **27**) and 130 nM (C15, **28**), with negligible toxicity (CC_{50} = 310 and 75 μ M, respectively).

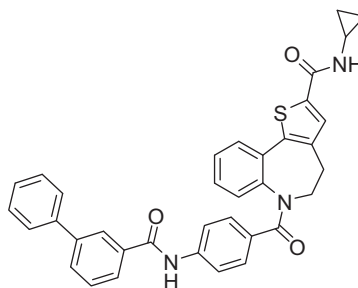
2.5.8 RSV Inhibitors Targeting Other RSV Genomic Proteins

A series of RSV inhibitors with a post-entry or unknown MOA have been published (Scheme 2.10) that go beyond the scope of this review and are mentioned only briefly. A post-entry MOA seems attractive since the window of intervention in the short-duration RSV infection could be longer, although no animal or clinical data have been reported that support this hypothesis. Unfortunately, the success rate for post-entry RSV inhibitors has been even lower than that for the fusion type inhibitors.

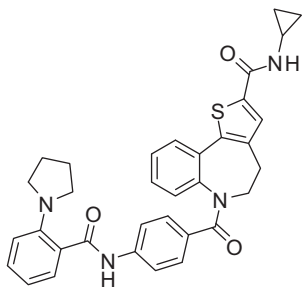
RSV604: The most extensive studies with non-fusion inhibitors were reported by Arrow with RSV604 (**29**) and reviewed by Chapman and Cockerill.⁶⁹ Overall, RSV604 has progressed to a Phase 2 study in hematopoietic stem cell transplant patients, which was challenging to enroll. Plasma exposure was variable and drug exposure reached only the EC_{90} range.⁷⁰



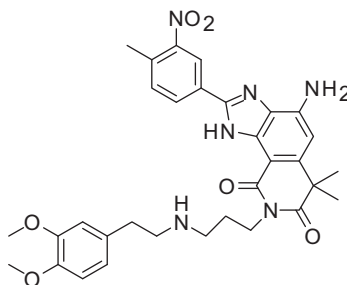
Arrow RSV604
compound **29**



Yamanouchi YM53403
compound **30**



Gilead, WO/2011/005842
compound **31**



BI WO2005042530A1
compound **32**

Scheme 2.10 Selected RSV inhibitors targeting other RSV genomic proteins.