

Figure 15.9. Conformationally restricted ACE inhibitors.

(50) extended this principle to prepare the very tight-binding tricyclic ACE inhibitor (23) (Fig. 15.9).

Several other  $\gamma$ -,  $\delta$ -, and  $\epsilon$ -lactam derivatives have been prepared and inserted into receptor antagonists or agonists. For instance, the thiazolidine lactam (24) (Fig. 15.10) has

been shown to induce the desired secondary structure in a gramicidin S analog. Later, it was used to prepare a conformationally restricted cyclosporin A analog (51). Several  $\beta$ -turn and  $\gamma$ -turn mimetics are shown in Figs. 15.10–15.12, and many other examples are available in the recent literature (52–54).

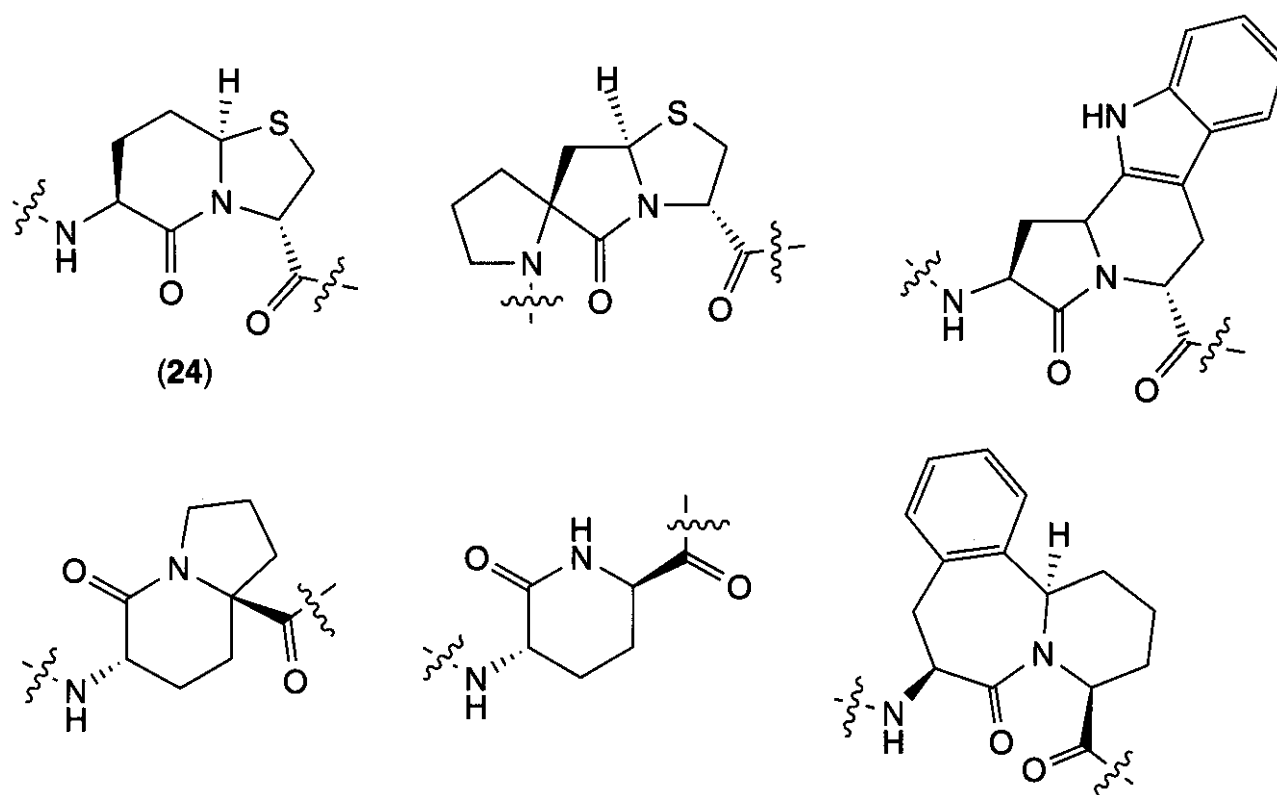


Figure 15.10. Lactams as  $\beta$ -turn mimetics.