

ANTI-HER2 MONOCLONAL ANTIBODY PLUS CHEMOTHERAPY FOR METASTATIC BREAST CANCER

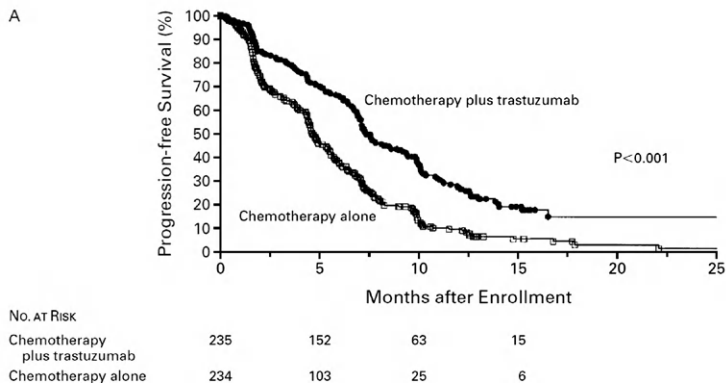


Figure 12.5 Kaplan-Meier plot of TTP from the Slamon study. The survival curves show PFS for the study drug arm and control arm

ANTI-HER2 MONOCLONAL ANTIBODY PLUS CHEMOTHERAPY FOR METASTATIC BREAST CANCER

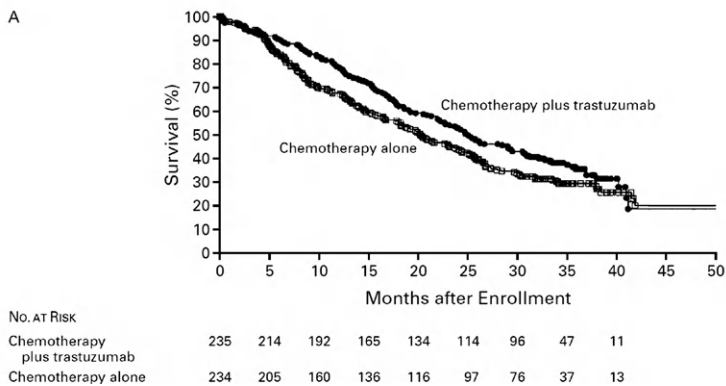


Figure 12.6 Kaplan-Meier plot of overall survival from the Slamon study. The survival curves show overall survival for the study drug arm and control arm

The principal investigator of this study, Dr. Dennis J. Slamon, is the subject of a movie called *Living Proof* (70). The movie documented his efforts in developing and testing the antibody.

⁷⁰ *Living Proof*. Sony Pictures Television, 2008.