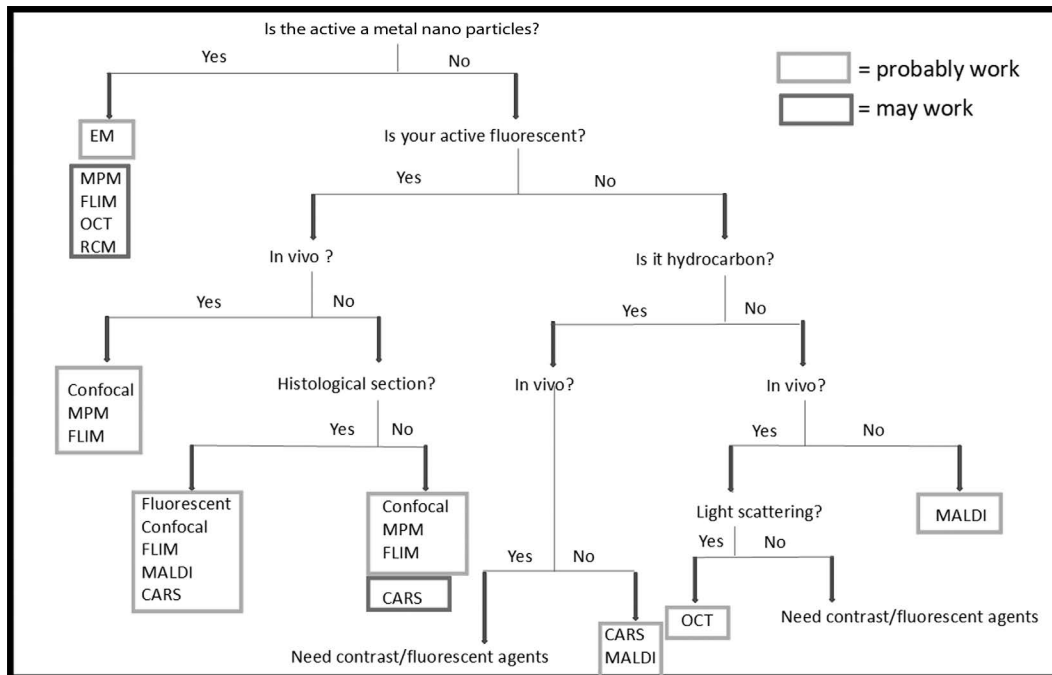


TABLE 56.3

A Flow Chart of Selection of Imaging Modality Based on Skin Models



REFERENCES

1. Calienni MN, Temprana CF, Prieto MJ, Paolino D, Fresta M, Tekinay AB, et al. Nano-formulation for topical treatment of precancerous lesions: skin penetration, in vitro, and in vivo toxicological evaluation. *Drug Deliv Transl Res.* 2018;8(3):496–514. Epub 2017/12/31.
2. Volz P, Schilrreff P, Brodwolf R, Wolff C, Stellmacher J, Balke J, et al. Pitfalls in using fluorescence tagging of nanomaterials: tecto-dendrimers in skin tissue as investigated by Cluster-FLIM. *Ann N Y Acad Sci.* 2017;1405(1):202–14. Epub 2017/10/07.
3. Romero G, Qiu Y, Murray RA, Moya SE. Study of intracellular delivery of doxorubicin from poly(lactide-co-glycolide) nanoparticles by means of fluorescence lifetime imaging and confocal Raman microscopy. *Macromol Biosci.* 2013;13(2):234–41. Epub 2013/01/15.
4. Witting M, Boreham A, Brodwolf R, Vavrova K, Alexiev U, Friess W, et al. Interactions of hyaluronic Acid with the skin and implications for the dermal delivery of biomacromolecules. *Mol Pharm.* 2015;12(5):1391–401. Epub 2015/04/15.
5. Russo C, Brickelbank N, Duckett C, Mellor S, Rumbelow S, Clench MR. Quantitative investigation of terbinafine hydrochloride absorption into a living skin equivalent model by MALDI-MSI. *Anal Chem.* 2018;90(16):10031–8. Epub 2018/07/20.
6. Fuchs CSK, Ortner VK, Mogensen M, Philipsen PA, Haedersdal M. Transfollicular delivery of gold microparticles in healthy skin and acne vulgaris, assessed by in vivo reflectance confocal microscopy and optical coherence tomography. *Lasers Surg Med.* 2019. Epub 2019/03/06.
7. Banzhaf CA, Ortner VK, Philipsen PA, Haedersdal M. The ablative fractional coagulation zone influences skin fluorescence intensities of topically applied test molecules-An in vitro study with fluorescence microscopy and fluorescence confocal microscopy. *Lasers Surg Med.* 2019;51(1):68–78. Epub 2018/12/26.
8. Banzhaf CA, Wind BS, Mogensen M, Meesters AA, Paasch U, Wolkerstorfer A, et al. Spatiotemporal closure of fractional laser-ablated channels imaged by optical coherence tomography and reflectance confocal microscopy. *Lasers Surg Med.* 2016;48(2):157–65. Epub 2015/08/13.