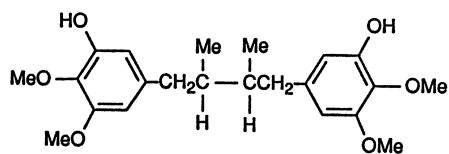


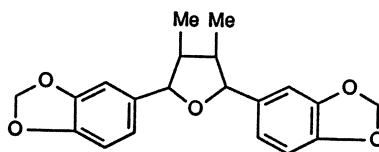
Table 111.1. (continued)

Compound	Structure	Plant origin	Reference
Rubschisantherin (111-42)		<i>S. rubriflora</i>	[34]
Schisanhenol B (111-43)		<i>S. rubriflora</i>	[34]

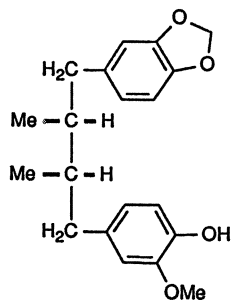
In addition several lignan derivatives without a dibenzo[*a,c*]cyclooctene structure were isolated from *Schisandra* species, such as pregomisin (111-44) from *S. chinensis* [24], epigalbacin (111-45) [35], anwulignan (111-46) [36] and ganschisandrine (111-47) [37] from *S. sphenanthera* and henricine (111-48) [38], wulignan A<sub>1</sub> (111-49), wulignan A<sub>2</sub> (111-50), epiwulignan A<sub>1</sub> (111-51), and epischisandrone (111-52) [39] from *S. henryi*.



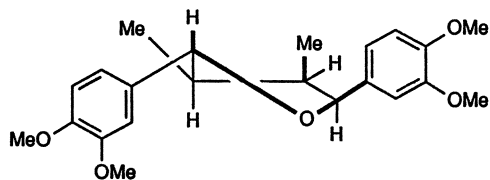
Pregomisin (111-44)



Epigalbacin (111-45)



Anwulignan (111-46)



Ganschisandrine (111-47)