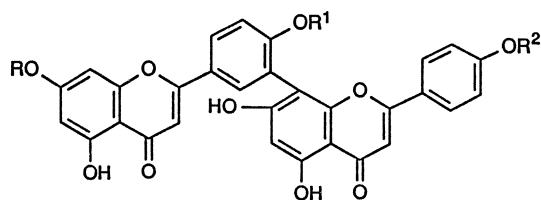


Fig. 73.1. Relationship between ginkgolide A and bilobalide

Besides the terpene constituents (ginkgolides and bilobalide) characteristic of ginkgo, the leaves of ginkgo contain a further number of compounds, such as the flavone glycosides kaempferol-3-rutinoside, quercetin-3-rutinoside, isorhamnetin-3-rutinoside [20], and octaacetylquercitrin [21], the flavones quercetin and its pentaacetyl derivative [21], the biflavones sciadopitysin (73-16), ginkgetin (73-14), isoginkgetin (73-15), bilobetin (73-13), and amentoflavone (73-12) [22–25].



	R	R ¹	R ²
Amentoflavone (73-12):	H	H	H
Bilobetin (73-13):	H	CH ₃	H
Ginkgetin (73-14):	CH ₃	CH ₃	H
Isoginkgetin (73-15):	H	CH ₃	CH ₃
Sciadopitysin (73-16):	CH ₃	CH ₃	CH ₃