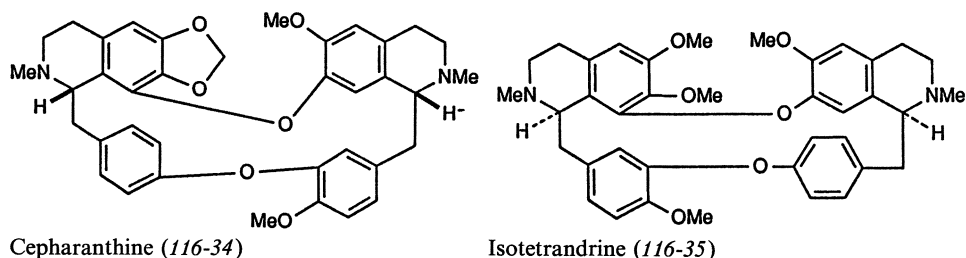


116.4.2 *Stephania cepharantha*

The tubers of *S. cepharantha* are another folk medicine in China that is used as an analgesic, diuretic, and tuberculostatic agent. A number of alkaloid constituents have been found.

116.4.2.1 Chemical Constituents

The main alkaloidal constituents in *S. cepharantha* are cepharanthine (116-34) and isotetrandrine (116-35) [62]. They are both alkaloids of the bisbenzylisoquinoline type.



In addition to the main alkaloids, a number of minor alkaloids of different structural types were isolated. Berbamine [62], cepharanoline (116-36) [63], and cycleanine [62] are further bisbenzylisoquinoline type alkaloids, whereas stephanine (116-37), crebanine (116-38), *O*-nornuciferine, and stesakine (116-39) are aporphine derivatives isolated from *S. cepharantha* [62, 63]. Moreover, the protoberberine-type alkaloid palmatine [64] and the hasubanan-type alkaloid cephamamine (116-40) [65] were also isolated and identified.

