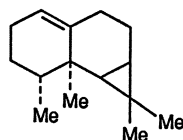
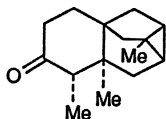


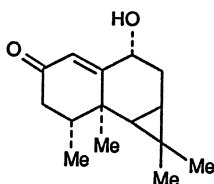
9-Aristolene (21-13)



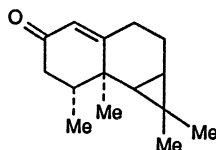
1(10)-Aristolene (21-14)



3-Oxoishwarane (21-16)



Debilone (21-15)

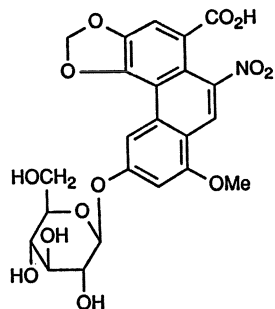


1(10)-Aristolenone (21-17)

21.2.2 Chemical constituents of *Aristolochia manshuriensis*

Aristolochic acid I methyl ester, aristolochic acid IV methyl ester, and aristolochic acid IVa were isolated from the stems of *A. manshuriensis* [18]. In addition a new glycoside, aristolochic acid D 6-*O*- β -D-glucopyranoside, was also isolated and named aristoloside or aristolochin (21-18) [18–20].

Magnoflorine was also detected in *A. manshuriensis* [20].



Aristoloside (Aristolochin) (21-18)

21.2.3 Chemical Constituents of *Aristolochia fangchi*

Thin layer chromatography (TLC) study of the constituents in the root of *A. fangchi* revealed that the ethanol extract contained aristolochic acid A, aristolochic acid D, aristolochic acid IV methyl ester, moupinamide, magnoflorine, *p*-coumaric acid, *N*-(*p*-hydroxyphenethyl)-*p*-coumaramide (21-19), syringic acid, palmitic acid, and