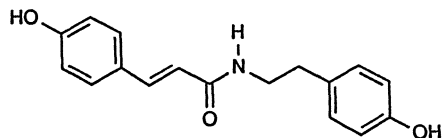


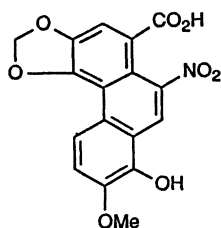
β -sitosterol. The yields of aristolochic acids and magnoflorine in the root of *A. fangchi* were approximately 0.02% and 0.9%, respectively [21].



N-(*p*-Hydroxyphenethyl)-*p*-coumaramide (21-19)

21.2.4 Chemical Constituents of *Aristolochia contorta*

From the root of *A. contorta*, aristolochic acid A and a new compound aristolochic acid E (21-20), were isolated together with allantoin, daucosterol, magnoflorine, and β -sitosterol [22, 23].

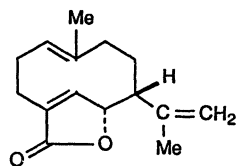


Aristolochic acid E (21-20)

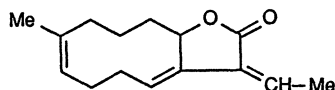
21.2.5 Chemical Constituents of Unofficial *Aristolochia* Species Used in Chinese Medicine

21.2.5.1 *Aristolochia mollissima*

From the aerial part of *A. mollissima*, aristolochic acid A [24], aristololactam, aristolochic acid D [25, 26], and the sesquiterpene aristolactone (21-21) [27, 28] were isolated and identified. Recently, a new sesquiterpene lactone, mollislactone (21-22), was isolated and structurally elucidated [29].



Aristolactone (21-21)



Mollislactone (21-22)

21.2.5.2 *Aristolochia kwangsiensis*

From the bulbs of *A. kwangsiensis*, aristolochic acid A was isolated with a yield of 0.06%, based on fresh weight [30, 31]. In addition, aristolochic acid IV methyl ester, aristolonic acid methyl ester (21-23), the denitro analogue of aristolochic acid IV methyl ester, allantoin, and β -sitosterol were found [32, 33].