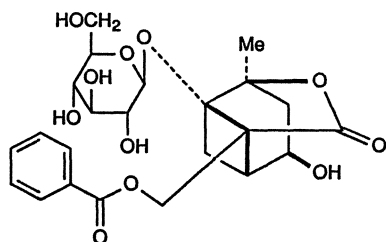
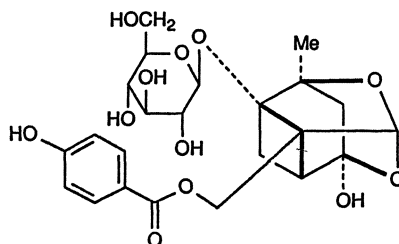


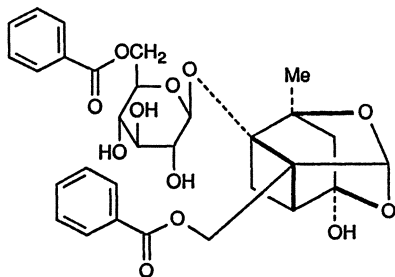
The structure of paeoniflorin, which involves a cage-like pinane skeleton, is unique among natural products. An X-ray crystallographic investigation, using a single crystal of the bromo derivative, was undertaken to confirm the structure and establish the absolute configuration [6]. Chromatographic separation of the methanolic extracts of the paeony roots, in addition to the major constituent paeoniflorin, demonstrated three minor principles named albiflorin (90-2), oxypaeoniflorin (90-3), and benzoylpaeoniflorin (90-4), which were isolated and structurally determined on the basis of paeoniflorin structure [6].



Albiflorin
(90-2)

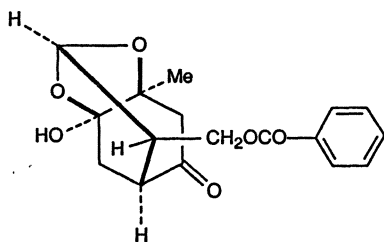


Oxypaeoniflorin
(90-3)



Benzoylpaeoniflorin
(90-4)

Furthermore, the monoterpenes paeoniflorigenone (90-5) [7, 8], and the paeonilactones A (90-6), B (90-7), and C (90-8) [9] were isolated from paeony roots.



Paeoniflorigenone (90-5)