

## 40.1 Introduction

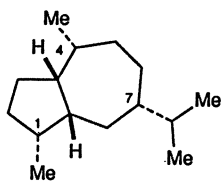
Two *Chrysanthemum* species are officially listed in the Chinese Pharmacopoeia:

- Yehuhua, Flos Chrysanthemi indici, is the dry composite inflorescence of *Chrysanthemum indicum* L. (Asteraceae), which is collected in the fall and winter. It is used in traditional Chinese medicine as an antiphlogistic for the treatment of carbuncle, furuncle, conjunctivitis, headache, and vertigo.
- Juhua, Flos Chrysanthemi, is the dry composite inflorescence of *C. morifolium* Ramat, which is collected from September to November. It is used as an antiphlogistic and against cold, headache, vertigo, and conjunctivitis.

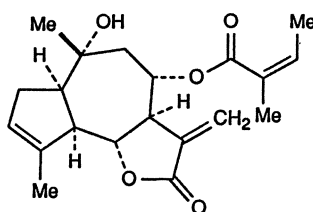
## 40.2 Chemical Constituents

### 40.2.1 Chemical Constituents of *Chrysanthemum indicum*

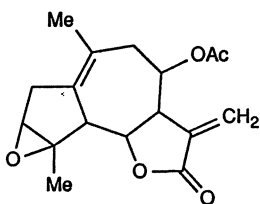
Three sesquiterpene guaianolides, lactones with a guaiane (40-1) skeleton were isolated from the aerial parts of *C. indicum* and structurally elucidated as angeloylcumambrin B (40-2), arteglasin A (40-3), and angeloylajadin (40-4) [1].



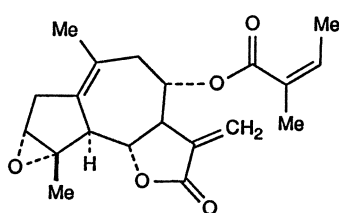
Guaiane (40-1)



Angeloylcumambrin B (40-2)



Arteglasin A (40-3)



Angeloylajadin (40-4)