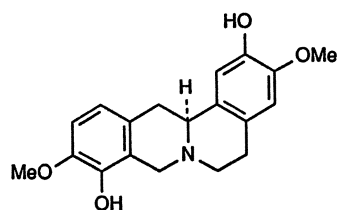
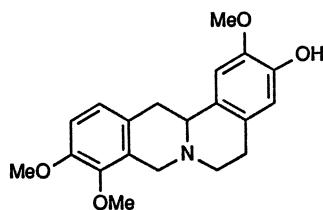


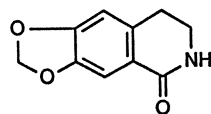
Further studies on the chemical constituents of the tuber of *C. ambigua* resulted in the isolation of the alkaloids scoulerine (49-11), tetrahydrojatrorrhizine (49-12), noroxyhydrastinine (49-13) [11], methylcorypalline (49-14), cavidine (49-15), dehydrothalictrifoline (49-16) [12], ambinine (49-17) [13], corydalmine (49-18), and dehydrocorydalmine (49-19) [11, 14]. Among these, noroxyhydrastinine and methylcorypalline are two isoquinoline alkaloids, whereas ambinine possesses a benzo[*c*]phenanthridine skeleton. The corydalmine and corybulbine contents reached their maximum in plants approximately 4 and 5 years old, whereas the cavidine content did not change with age of the cultivated plants [15].



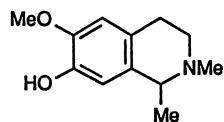
Scoulerine (49-11)



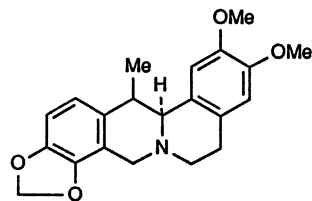
Tetrahydrojatrorrhizine (49-12)



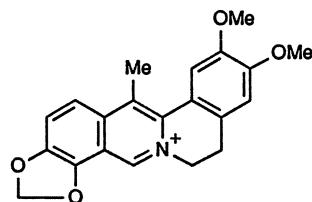
Noroxyhydrastinine (49-13)



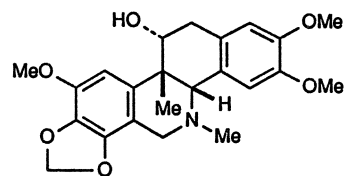
Methylcorypalline (49-14)



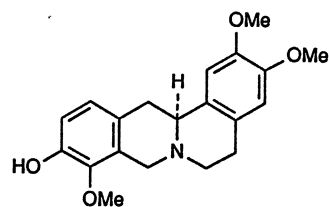
Cavidine (49-15)



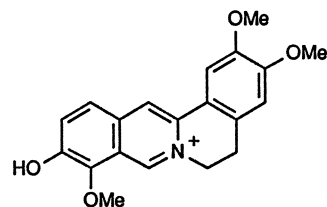
Dehydrothalictrifoline (49-16)



Ambinine (49-17)



Corydalmine (49-18)



Dehydrocorydalmine (49-19)