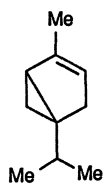
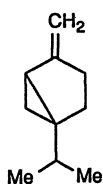
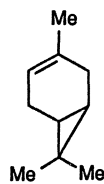
*p*-Menth-2-en-1-ol (12-15)

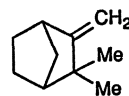
α -Thujene (12-16), sabinene (12-17), 3-carene (12-18), camphene (12-19), α -pinene (12-20), β -pinene (12-21), and α -fenchene (12-22) are bicyclic monoterpenes, whereas β -thujone (12-23), borneol (12-24), isoborneol (12-25), and α -fenchol (12-26) are oxygenated bicyclic monoterpenes.

 α -Thujene (12-16)

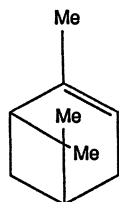
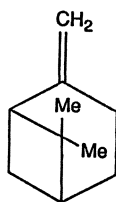
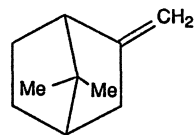
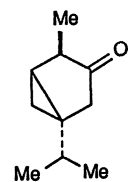
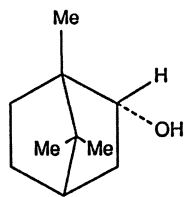
Sabinene (12-17)



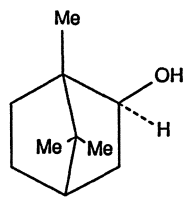
3-Carene (12-18)



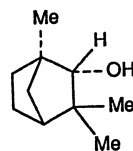
Camphene (12-19)

 α -Pinene (12-20) β -Pinene (12-21) α -Fenchene (12-22) β -Thujone (12-23)

Borneol (12-24)



Isoborneol (12-25)

 α -Fenchol (12-26)

Among the sesquiterpenes, β -farnesene (12-27) is aliphatic; β -bisabolene (12-28) and α -humulene (12-29) are monocyclic; and β -caryophyllene (12-30) and α -copaene (12-31) are bicyclic and tricyclic sesquiterpenes, respectively.