

30.1 Introduction

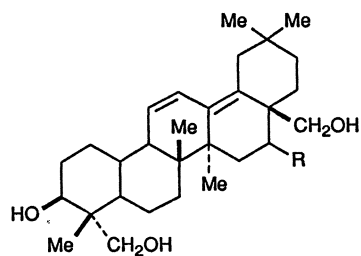
Chaihu, Radix Bupleuri, is the dry root of *Bupleurum chinense* DC. or *B. scorzonerifolium* Willd. (Apiaceae) collected in spring and fall. It is listed officially in the Chinese Pharmacopoeia and used in traditional Chinese medicine in treatment of influenza, fever, malaria, and menstrual disorders.

It is specifically stressed in the Chinese Pharmacopoeia that the root of *B. longiradiatum* Turcz. must not be used clinically because of its toxicity. In the appendix of the Chinese Pharmacopoeia *B. marginatum* Wall. ex DC. is accepted. Besides the official *Bupleurum* species, *B. falcatum* L. [1] has also been used.

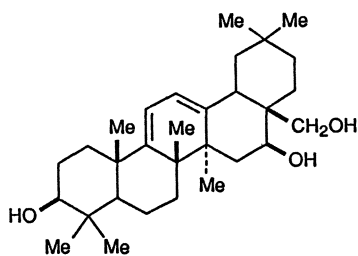
30.2 Chemical Constituents

30.2.1 Chemical Constituents of *Bupleurum falcatum*

A series of triterpene saponins and sapogenins, named saikosaponins and saikogenins, were isolated from the root of *B. falcatum* and structurally characterized. Thus, saikogenin A (30-1) [2–5], saikogenin B (30-2) [5–7], saikogenin C (30-3) [4, 5, 7], saikogenin D (30-4) [4, 5], saikogenin E (30-5) [8–10], saikogenin F (30-6) [9, 11], saikogenin G (30-7) [9, 10], saikosaponin A (30-8) [12, 13], saikosaponins B₁–B₄ (30-9–30-12) [14], saikosaponin C (30-13) [12], saikosaponin D (30-14) [12], saikosaponin E (30-15) [15], and saikosaponin F (30-16) [16] were isolated and their structure determined. All the saikogenins are derived from oleanane.



Saikogenin A (30-1): R = β -OH
 Saikogenin D (30-4): R = α -OH



Saikogenin B (30-2)