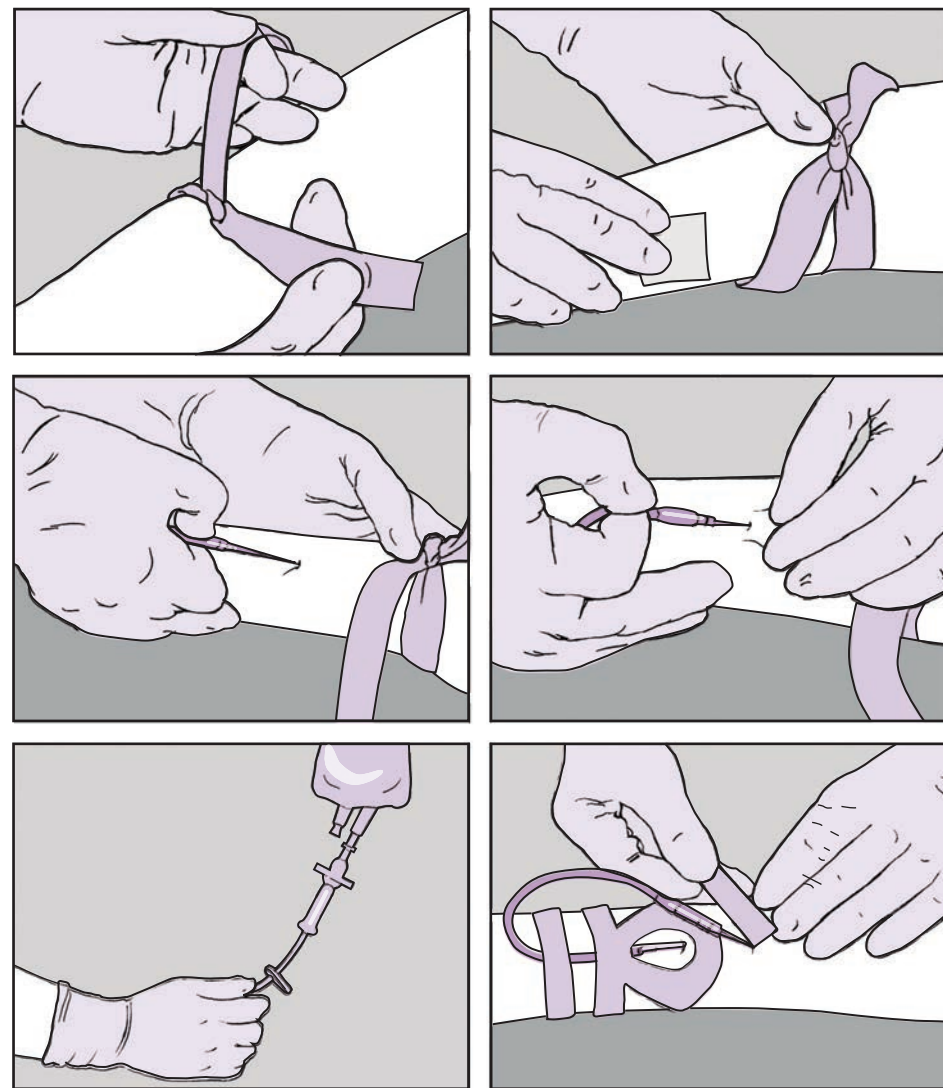


Procedure Box 10-13 *Insertion of an IV Line—cont'd*

16. Secure the site with an occlusive, waterproof dressing and tape.
17. Some organizations require certain information be written on the dressing, such as your initials and the date and time.
18. Assess the patient.
19. Remove gloves and wash hands.
20. Document medication administration and the patient's response.

Example:

06/21/2012 10:00 a.m.: #22 Angiocath placed to left hand after 1 unsuccessful attempt. D5LR started at 75 mL/hr as ordered. Patient tolerated procedure well. Patient advised of signs and symptoms to report to staff and states understanding. CJ Watkins RN, MSN



Health professionals are sometimes allowed to stop IV therapy. To do so, put on gloves and then loosen the securing tape. Gently pull out the needle or catheter, and properly dispose of it. Apply pressure to the site with a sterile 2 × 2 gauze pad until the bleeding stops. Be sure to assess the patient and document the removal, including the time and date. Follow your organization's policy for assessing the site, changing sites, flushing, and changing tubing.